



Descriptions

The DIO3340QN18 is a high-speed bidirectional passive switch in mux or demux configurations suited for USB Type-C™ application supporting USB 3.1 Gen 1 and Gen 2 data rates. Based on control pin SEL, the device provides switching on differential channels between Port L0 or Port L1 to Port C0. The DIO3340QN18 is a generic analog differential passive switch that can work for any high-speed interface applications requiring a common mode voltage range of 0 to 2 V and differential signaling with differential amplitude up to 1.8Vpp. It employs adaptive tracking that ensures the channel remains unchanged for the entire common mode voltage range. Excellent dynamic characteristics of the device allow high-speed switching with minimum attenuation to the signal eye diagram with very little added jitter. It consumes <2mW of power when operational and has a shutdown mode exercisable by _EN pin resulting <20uW.

The DIO3340QN18 is available in QFN 2 x 3 with Pb-free and Halogen-free making it a perfect candidate for mobile and space constrained applications.

Features

- Wide Supply Range 1.5 V to 5.5 V
- Differential 2:1 or 1:2 Switch/Multiplexer
- USB 3.1 Super Speed 10Gbps Switch
- High Bandwidth: 5.1GHz @ -3dB Bandwidth
- Isolation: -24dB @ 1.25 GHz
- Crosstalk: -34dB @ 1.25 GHz
- Low bit-to-bit skew, Bidirectional
- ESD Tolerance: 2kV HBM
- Powered Off Protection When VDD = 0 V
- 1.8-V Compatible Logic Inputs

Applications

- USB Type-C Ecosystem
- Desktop and Notebook PCs
- Server/Storage Area Networks
- PCI Express Backplanes
- Shared I/O Ports
- FPD LinkII and FPD LinkIII Switching

Order Information

Part Number	Package	
DIO3340QN18	QFN2X3	Tape and Reel



Block Diagram

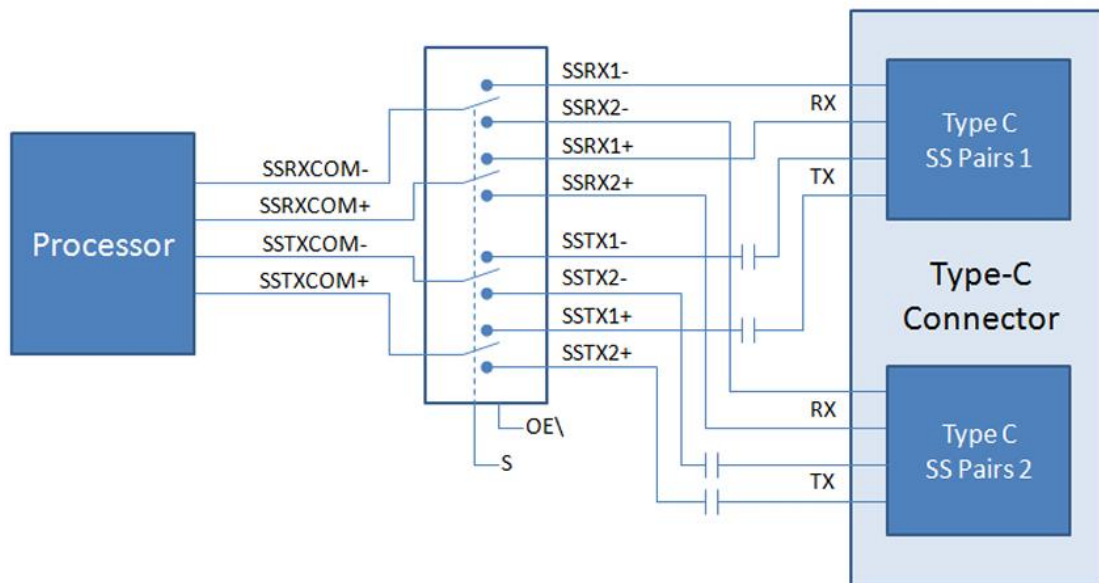


Fig.1 Block Diagram

Typical Application

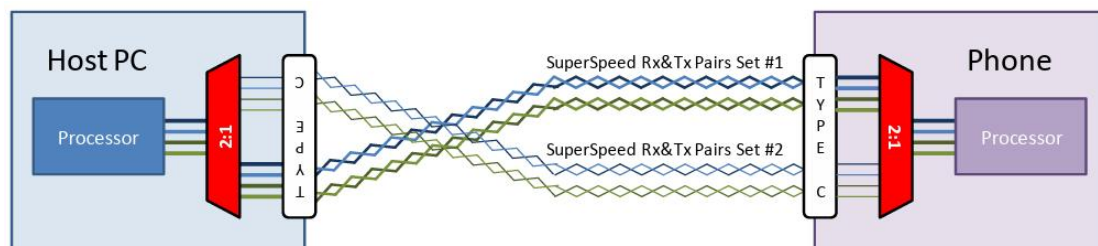


Fig.2 Typical Application



Pin Configuration

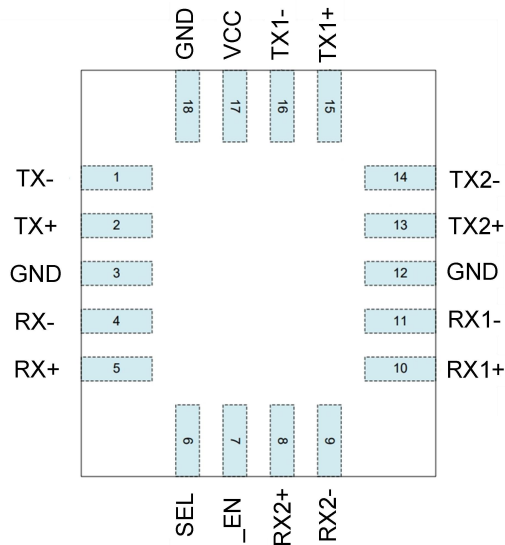
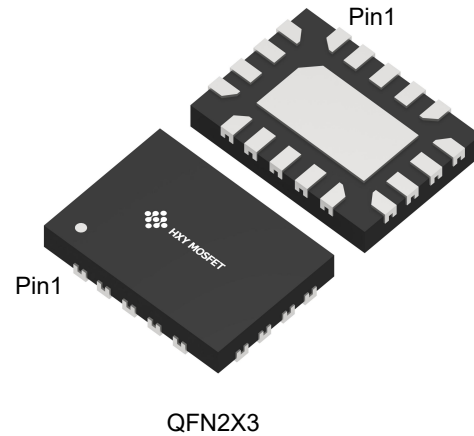


Fig.3 Pin Configuration



Pin Description

Pin#	Pin Name	Signal Type	Description
1	TX-	I/O	Super Speed TX- Common
2	TX+	I/O	Super Speed TX+ Common
3,12,18	GND	GND	Ground
4	RX-	I/O	Super Speed RX- Common
5	RX+	I/O	Super Speed RX+ Common
6	SEL	I	Switch logic control
7	_EN	I	Chip Enable, Active Low
8	RX2+	I/O	Super Speed RX2+
9	RX2-	I/O	Super Speed RX2-
10	RX1+	I/O	Super Speed RX1+
11	RX1-	I/O	Super Speed RX1-
13	TX2+	I/O	Super Speed TX2+
14	TX2-	I/O	Super Speed TX2-
15	TX1+	I/O	Super Speed TX1+
16	TX1-	I/O	Super Speed TX1-
17	VCC	Power	Supply Voltage

Table-1 Pin Description

Truth Table

_EN	SEL	TX+	TX-	RX+	RX-
High	X	Hi-Z	Hi-Z	Hi-Z	Hi-Z
Low	Low	TX1+	TX1-	RX1+	RX1-
Low	High	TX2+	TX2-	RX2+	RX2-

Table-2 Truth Table



Maximum Ratings

(Above which useful life may be impaired. For user guidelines, not tested.)

Storage Temperature	-65℃ to +150℃
Junction Temperature	125℃
Supply Voltage to Ground Potential	-0.5V to +5.5V
Supe Speed Data Channel TX / RX	-0.5V to 3.8V
DC Input Voltage	-0.5V to VCC
DC Output Current	50mA
Power Dissipation	300mW

Table-3 Maximum Description

Notes:

Stresses greater than those listed under MAXIMUM RATINGS may cause permanent damage to the device. This is a stress rating only and functional operation of the device at these or any other conditions above those indicated in the operational sections of this specification is not implied. Exposure to absolute maximum rating conditions for extended periods may affect reliability.



Electrical Characteristics (Ta=25°C, VCC=1.8V, unless otherwise specified)

Parameter	Symbol	Conditions	Min.	Typ.	Max.	Unit
VCC Quiescent Current	I _Q	SEL=0 or VCC, _EN=0		28		uA
Power-down Current	I _{PD}	SEL=0 or VCC, _EN=VCC			1	uA
Input logic high	V _{IH}	VCC=1.8~4.5V	1.6			V
Input logic low	V _{IL}	VCC=1.8~4.5V			0.4	V
_EN Internal pull-up resistor	R _{UP}			2		MΩ
SEL Internal pull-down resistor	R _{DN}			2		MΩ
On-Resistance for TX/RX	R _{ON_HS}	V _{IS} = 0.2V I _{ON} =8mA		6.7	8	Ω
R _{ON} Flatness for TX/RX	R _{FLAT_LP}	V _{IS} = 0 to 1.2V I _{ON} =8mA		0.8	1	Ω
R _{ON} Flatness for TX/RX	R _{FLAT_LP}	V _{IS} = 0 to 0.2V I _{ON} =8mA		0.2	0.3	Ω
R _{ON} Matching Between Channels	R _{MATCH}	V _{IS} = 0 to 1.2V I _{ON} =8mA		0.1		Ω
Switch Off Leakage Current	I _{OFF}	_EN=VCC , Tx, Rx =VCC TX1, TX2, RX1, RX2=0	-0.5		0.5	uA
Enable Time _EN to Output	t _{EN}	R _L =50Ω C _L =0pF V _{IS} = 0.6V		80	150	uS
Disable Time _EN to Output	t _{DIS}	R _L =50Ω C _L =0pF V _{IS} = 0.6V		40	250	nS
Turn-On Time SEL to Output	t _{ON}	R _L =50Ω C _L =0pF V _{IS} = 0.6V		400	1200	nS
Turn-Off Time SEL to Output	t _{OFF}	R _L =50Ω C _L =0pF V _{IS} = 0.6V		130	800	nS
Break-Before-Make Time	t _{BBM}	R _L =50Ω C _L =0pF V _{IS} = 0.6V		250	500	nS
Propagation Delay	t _{PD}	R _L =50Ω C _L =0pF V _{IS} = 0.6V		0.25		nS
Off Isolation	Off	R _L = 50Ω f = 1.2GHz V _{IS} = 0.2V _{PP}		-27		dB
Crosstalk	X _{TALK}	R _L = 50Ω f = 1.2GHz V _{IS} = 0.2V _{PP}		-43		dB
-3dB Bandwidth	BW _{-3dB}	R _L =50Ω C _L =0pF Signal 0dBm	4.5	5.1		GHz
Switch On Capacitance	C _{ON}	V _{Bias} = 0.2V, f = 1.5GHz		1.5		pF
Switch Off Capacitance	C _{OFF}	V _{Bias} = 0.2V, f = 1.5GHz		1.0		pF

Table-4 Electrical Characteristics



Typical Performance Curves (Ta=25°C, VCC=3.0V, CAP=0.1uF, unless otherwise noted)

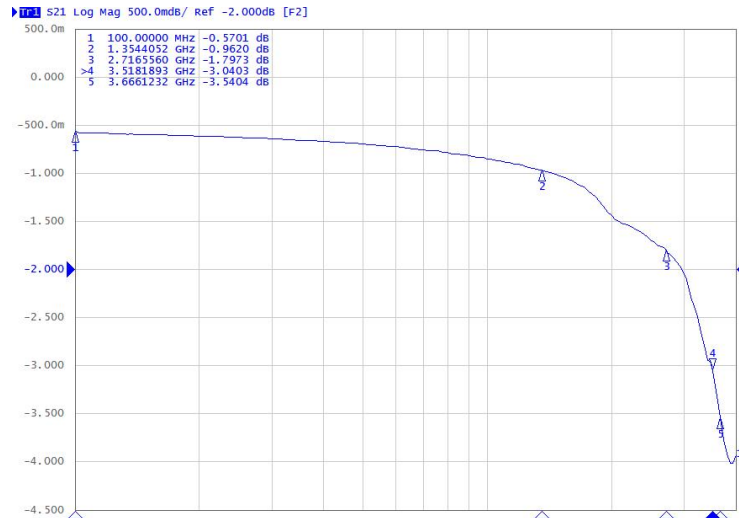


Fig.4 Switch Bandwidth or Insertion Loss

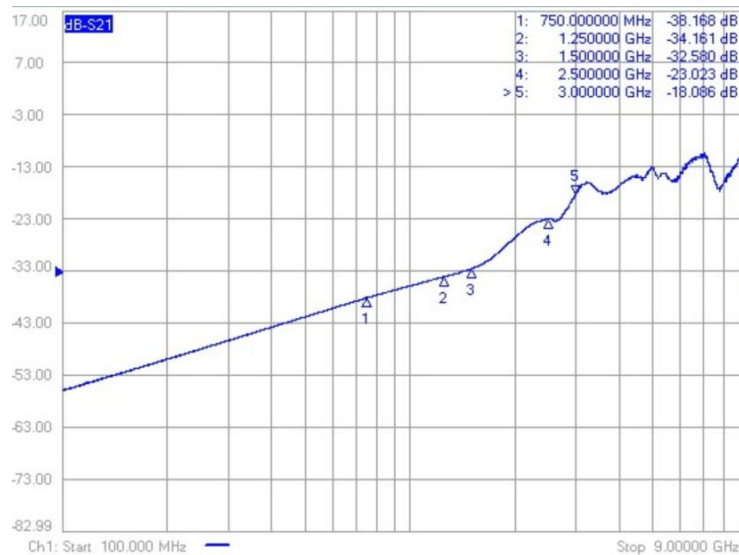


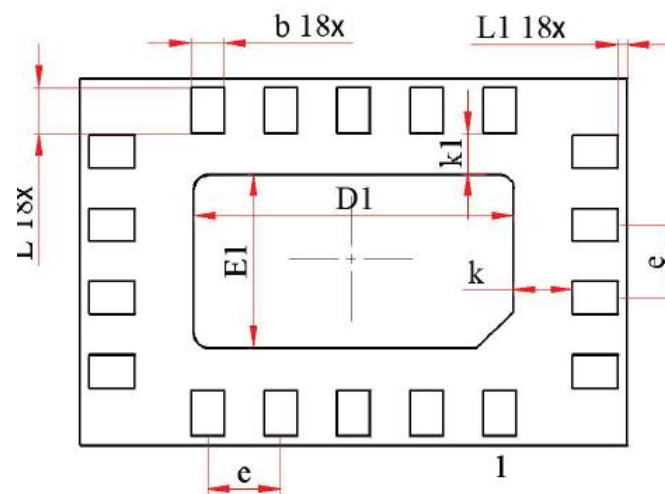
Fig.5 Switch Channel to Channel Cross-Talk



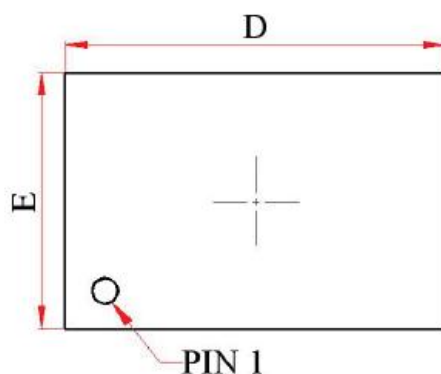
Fig.6 Switch Off Isolation



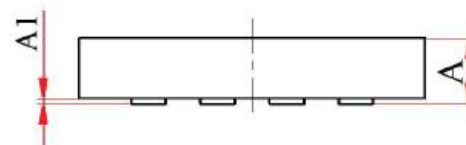
Package Outline Dimensions



Bottom View



Top View



Side View

Symbol	Dimension In Millimeters			Dimension In Inches		
	Normal	Min	Max	Normal	Min	Max
A	--	0.340	0.400	--	0.013	0.016
A1	--	0.010	0.050	--	0.000	0.002
D	3.000	2.950	3.050	0.118	0.116	0.120
E	2.000	1.950	2.050	0.079	0.077	0.081
D1	1.750	1.700	1.800	0.069	0.067	0.071
E1	0.950	0.900	1.000	0.037	0.035	0.039
b	0.180	0.150	0.210	0.007	0.006	0.008
L	0.250	0.200	0.300	0.010	0.008	0.012
L1	0.050	0.010	0.090	0.002	0.000	0.004
k	0.325 REF			0.013 REF		
k1	0.225 REF			0.009 REF		
e	0.400 BSC			0.016 BSC		



Attention

- Any and all HUA XUAN YANG ELECTRONICS products described or contained herein do not have specifications that can handle applications that require extremely high levels of reliability, such as life-support systems, aircraft's control systems, or other applications whose failure can be reasonably expected to result in serious physical and/or material damage. Consult with your HUA XUAN YANG ELECTRONICS representative nearest you before using any HUA XUAN YANG ELECTRONICS products described or contained herein in such applications.
- HUA XUAN YANG ELECTRONICS assumes no responsibility for equipment failures that result from using products at values that exceed, even momentarily, rated values (such as maximum ratings, operating condition ranges, or other parameters) listed in products specifications of any and all HUA XUAN YANG ELECTRONICS products described or contained herein.
- Specifications of any and all HUA XUAN YANG ELECTRONICS products described or contained herein stipulate the performance, characteristics, and functions of the described products in the independent state, and are not guarantees of the performance, characteristics, and functions of the described products as mounted in the customer's products or equipment. To verify symptoms and states that cannot be evaluated in an independent device, the customer should always evaluate and test devices mounted in the customer's products or equipment.
- HUA XUAN YANG ELECTRONICS CO.,LTD. strives to supply high-quality high-reliability products. However, any and all semiconductor products fail with some probability. It is possible that these probabilistic failures could give rise to accidents or events that could endanger human lives, that could give rise to smoke or fire, or that could cause damage to other property. When designing equipment, adopt safety measures so that these kinds of accidents or events cannot occur. Such measures include but are not limited to protective circuits and error prevention circuits for safe design, redundant design, and structural design.
- In the event that any or all HUA XUAN YANG ELECTRONICS products(including technical data, services) described or contained herein are controlled under any of applicable local export control laws and regulations, such products must not be exported without obtaining the export license from the authorities concerned in accordance with the above law.
- No part of this publication may be reproduced or transmitted in any form or by any means, electronic or mechanical, including photocopying and recording, or any information storage or retrieval system, or otherwise, without the prior written permission of HUA XUAN YANG ELECTRONICS CO.,LTD.
- Information (including circuit diagrams and circuit parameters) herein is for example only ; it is not guaranteed for volume production. HUA XUAN YANG ELECTRONICS believes information herein is accurate and reliable, but no guarantees are made or implied regarding its use or any infringements of intellectual property rights or other rights of third parties.
- Any and all information described or contained herein are subject to change without notice due to product/technology improvement, etc. When designing equipment, refer to the "Delivery Specification" for the HUA XUAN YANG ELECTRONICS product that you intend to use.